



Cole & Son®

COLOUR • PATTERN • EXCEPTIONAL WALLPAPERS & FABRICS

SEVILLE



Spanning over two millennia of royal heritage and a plethora of cultural fusions, the Andalusian capital of Seville is a captivating testament to the city's lineage of diverse settlers. From its Phoenician foundation to Roman rule, and centuries of Islamic dynasties and Christian Castilian conquerors, came waves of unique crafts and traditions leaving an indelible mark upon the Iberian city port.

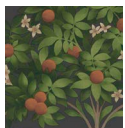
From the breath-taking blend of Mudéjar architecture and art, fragrant flora and diverse fauna, to the percussive strumming of guitarists accompanying passion-filled flamenco dancers resounding through the vibrant city, emerges Cole & Son's latest collection Seville. With graphic architectural prints in sun-drenched antique palettes to vibrant botanicals and primary-toned ceramic tile motifs, Seville captures all the ebullience of southern Spain.



117/1001



117/1002



117/1003



117/1004

Orange Blossom

Colourways: Orange & Spring Green on Parchment; Lemon & Dark Olive Green on Duck Egg; Orange & Spring Green on Black; Burnt Orange & Mint on Seafoam

Oranges are synonymous with Seville, with its city streets and courtyards teeming with fruit trees. This delicate, fabric-like representation of Seville's iconic fruit pays homage to the regal tapestries found hanging in the Royal Alcazar's Salón de los Tapices with a subtle textured feel to its foliage. Orange Blossom's elegant repeat is presented in muted, vintage-inspired palettes of Orange & Spring Green on Parchment; Lemon & Dark Olive Green on Duck Egg; Burnt Orange & Mint on Seafoam; and the moody Orange & Spring Green on Black.



117/2005

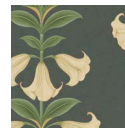
Hispalis

Colourways: Khaki Multi

Hispalis takes its name from the Latinisation of Seville's earliest known moniker, Spal, with Julius Caesar designating the city Colonia Iulia Romula Hispalis. This tapestry-like design depicts an antique land in the balmy late afternoon sun with its densely overgrown archway in sun-bleached shades of Khaki, Burnt Orange and Sand.



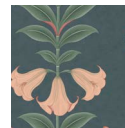
117/3007



117/3006



117/3008



117/3009

Alfaro

Colourways: Canary Yellow & Petrol on Parchment; Ochre & Racing Car Green on Terracotta; Dark Ochre & Forest Green on Duck Egg

The Plaza Alfaro residence in Seville is said to have inspired the iconic balcony scene in Shakespeare's Romeo and Juliet. With its wrought iron balustrades, sunshine yellow paintwork and blooming tropical flowers, Alfaro is a vibrant ode to Sevillian architecture in true-to-life tones of Canary Yellow & Petrol on Parchment; Ochre & Racing Car Green on Terracotta; and Dark Ochre & Forest Green on Duck Egg.



117/4011



117/4010



117/4012

Angel's Trumpet

Colourways: Cream & Olive Green on Charcoal; Chalk & Sage on Stone; Ballet Slipper & Sage on Cerulean Sky; Coral & Viridian on Ink

Native to the tropics of South America, Angel's Trumpet flourishes in the searing Sevillian heat of the Alcazar's courtyards and city gardens. Its feminine shape is enhanced by delicate, painterly details in pretty palettes of Cream & Olive Green on Charcoal; Chalk & Sage on Stone; Ballet Slipper & Sage on Cerulean Sky; and Coral & Viridian on Ink. Entirely hand-painted in a traditional botanical illustration style, Angel's Trumpet creates a beautifully bold, elegant floral stripe.



117/5013



117/5014



117/5015

Bougainvillea

Colourways: Rouge, Olive Green & Emerald on Cream; Rouge, Leaf Green & Cerulean Sky on Charcoal; Marigold, Leaf Green & Emerald on Parchment; Ochre, Viridian & Petrol on Ink

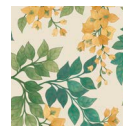
Covering palaces, chalky plaster walls and creating bright borders to parks and sun-soaked avenues, Bougainvillea is another of Seville's vibrantly coloured flora. With its soft, water-coloured petals and leaves, Bougainvillea's inflorescence has a delicate ombré creating movement and life. Choose from organic, sunshine palettes of Rouge, Olive Green & Emerald on Cream; and Marigold, Leaf Green & Emerald on Parchment; or the deeper evening tones of Rouge, Leaf Green & Cerulean Sky on Charcoal; and Ochre, Viridian & Petrol on Ink.



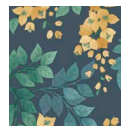
117/6016



117/6017



117/6018

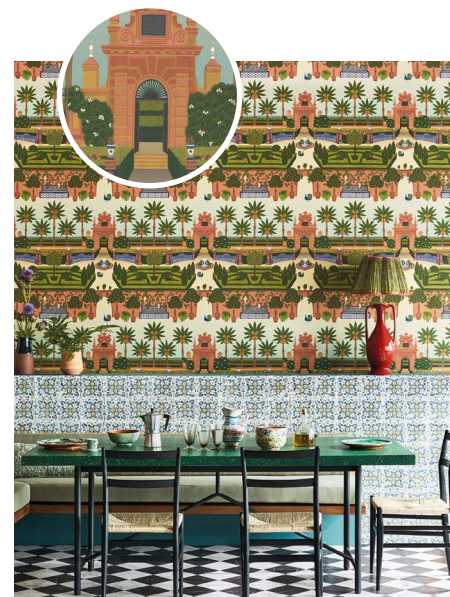


117/6019

Triana

Colourways: Canary Yellow & China Blue on Teal; Teal & Dark Teal on Denim; Marigold & Hyacinth on Canary Yellow

The Triana neighbourhood is home to Seville's famous ceramic workshops and potteries, filled with artisans creating the traditional, vibrant tiles seen throughout the city. Triana's design contains time-honoured elements of flowers, leaves, and geometric shapes, hand-painted to reflect each of the unique hand-crafted tiles to come out of this bustling quarter. Choose from classic, primary palettes of Canary Yellow & China Blue on Teal; Teal & Dark Teal on Denim; and Marigold & Hyacinth on Canary Yellow.



117/7020

Alcazar Gardens

Colourways: Terracotta & Spring Green Multi

An enduring architectural icon of the city, the Real Alcazar is a stunning testament to centuries' old blend of Mudéjar architecture and ornamentation. Now a UNESCO World Heritage Site, the Alcazar left an indelible impression on the Cole & Son design studio, leading to this fantastical interpretation of the fortress palace's gardens. Illustrative and pictorial in style, it is a unique artwork piece presented in a classic Terracotta & Spring Green Multi colour palette.

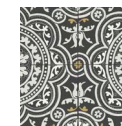
Piccadilly

Colourways: Petrol, Red & Metallic Gold on Ink; Grey & Metallic Gold on Black; Leaf Green & Mint on Forest; Denim & Rouge on Chalk

Composed of a host of beautiful curved, swirling lines, Piccadilly is a classic tile print found throughout Seville, from the Alcazar's tiled bench nooks, to restaurant walls and elaborate ceramic floors. Piccadilly's traditional print is made contemporary in striking shades of Petrol, Red & Metallic Gold on Ink; Grey & Metallic Gold on Black; Leaf Green & Mint on Forest; and Denim & Rouge on Chalk.



117/8021



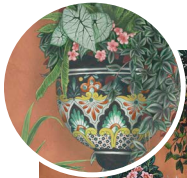
117/8022



117/8023



117/8024



117/9025



117/9026



117/9027

Talavera

Colourways: Rose & Spring Greens on Terracotta; Fuchsia & Forest Greens on Cerulean Sky; Magenta & Spring Greens on Stone

Talavera's plentiful pots abundant in flowers and trailing plants can be found throughout Spain, with the traditional ceramics each painted with their own unique decoration. The plaster-style grounds of Terracotta, Cerulean Sky, and Stone are reminiscent of Seville's sun-soaked buildings with the pots presented in authentic tones of Rose & Spring Greens; Fuchsia & Forest Greens; and Magenta & Spring Greens.



117/11032



117/11033



117/11034



117/11035

Geranium

Colourways: Lemon & Forest Greens on Electric Blue; Rouge & Leaf Greens on Black; Rose & Forest Greens on Parchment; White & Sage on Seafoam

Flourishing in Seville's temperate climate, geraniums can be found adorning balconies as well as creating vibrant bursts of colour throughout parks and cultivated gardens. This archive design was completely redrawn and repainted by the Cole & Son design studio to enhance the lush, robust fanned leaves and blooming clusters of bright petals in vibrant Lemon & Forest Greens on Electric Blue; earthy White & Sage on Seafoam; and the day to night Rose & Forest Greens on Parchment; and Rouge & Leaf Greens on Black.

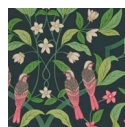
Jasmine & Serin Symphony

Colourways: Rose & Racing Car Green on Dark Viridian; Yellow & Leaf Green on Dark Forest Green; Coral & Petrol on Ink; Chartreuse & Olive Green on White

At once sprawling and serene, Jasmine & Serin Symphony is a contemporary update of a graceful Arts and Crafts-style print. Depicting ethereal birds perched among trailing jasmine vines, its flora and fauna create a subtle ombré as the design fans in gentle arcs across the wall. Presented in soft botanical shades of Rose & Racing Car Green on Dark Viridian; Yellow & Leaf Green on Dark Forest Green; Coral & Petrol on Ink; and Chartreuse & Olive Green on White.



117/10031



117/10028



117/10029

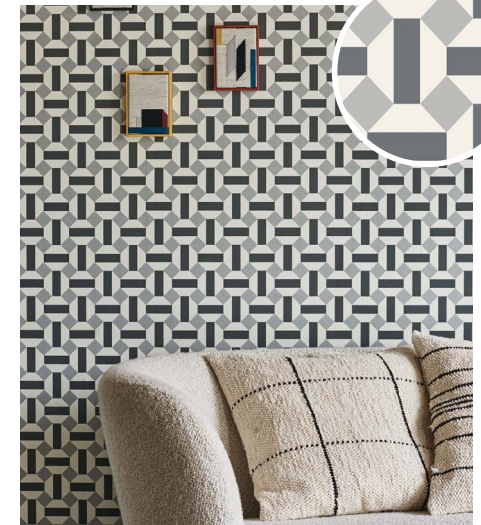


117/10030

Alicatado

Colourways: Soot on Snow; Hyacinth on Chalk; Leaf Greens on Chalk; Terracotta on Parchment

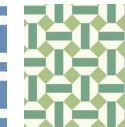
Alicatado, meaning a geometric mosaic of coloured glazed tiles, is the design studio's interpretation of Seville's famous azulejos. Its simple two-toned print creates a striking graphic backdrop and has been designed and coloured in order to complement other designs within the collection. Choose from fresh hues of Hyacinth or Leaf Greens on Chalk, as well as the monochromatic Soot on Snow, and the warm Terracotta on Parchment.



117/12036



117/12037



117/12038



117/12039



117/13040



117/13041



117/13042

Lola

Colourways: Forest Greens on White; China Blues on Midnight; Petrol Blues on White

Lola is a damask with a hidden secret; within the rolling scrolls and flowers of this archive print is one of Seville's most iconic figures: the flamenco dancer. With its cultural origins firmly in Andalusia, Lola captures the dynamic, vivacious drama of a traditional flamenco performance. Verdant palettes of Forest Greens on White and Petrol Blues on White evoke a freshness, whilst China Blues on Midnight are reminiscent of a deep evening sky.



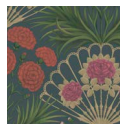
Flamenco Fan

Colourways: Cerise, Dark Tangerine & Metallic Gold on Black; Magenta, Red & Metallic Silver on Ink; Fuchsia, Rouge & Metallic Gold on Cream; Rose, Bright Rouge & Metallic Gold on Crimson

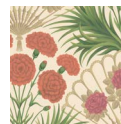
A cultural symbol of Spain and deeply entrenched within flamenco culture, the fan exudes romance and passion with its dramatic shape and versatile movement. The theatrical print of Flamenco Fan incorporates many of the dance's notable symbols such as the carnation and rose, both representing love and admiration. The delicate metallic detailing of the fans elevates decadent tones of Rose, Bright Rouge & Metallic Gold on Crimson, and the sultry Cerise, Dark Tangerine & Metallic Gold on Black; and Magenta, Red & Metallic Silver on Ink, as well as the soft, lace-like Fuchsia, Rouge & Metallic Gold on Cream.



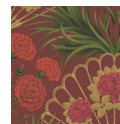
117/14043



117/14044



117/14045



117/14046



www.cole-and-son.com



PRESS CONTACT
Juliana Pestana
juliana@alexandrapr.com
+44 (0) 207 371 9225
www.alexandrapr.com